

# Hydraulic/Foot operated type

## HLH Standard

Load capacity: 264 to 2205 lbs



HLH-400M



The cart can be moved freely and can be elevated from a low position to a high position according to the work environment.

It is a lifter with many applications and is only limited by your imagination.

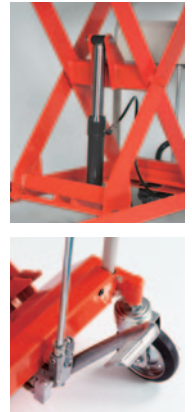
Also, based on the JIS standard, the lowering of the table is minimized to 2% or less strokes when left for 15 minutes with the maximum load weight.

### Major features of the HLH Series

- ☐ Hydraulic cylinder
- ☐ Swivel casters with brakes
- ☐ Foot pedal type
- ☐ Comes with an overloading prevention device \*1
- ☐ Has a springback mechanism in the release handle.

In an emergency, lowering will stop as soon as you release the handle \*2

Note) To raise the lift, tighten the release handle.



### Foot pedal for easy height adjustment

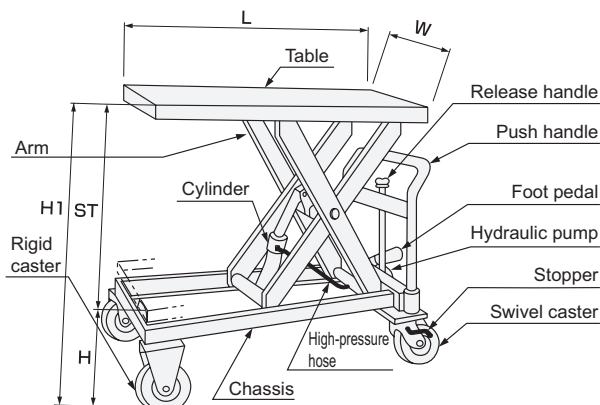
Height can be adjusted to match the work line by just stepping on the pedal. This is very useful in improving work efficiency.

**Oil used** Turbine oil: ISO VG22

**Materials** Pump : Urethane type resin spray painting  
Cylinder : Urethane type resin spray painting  
Main body : Baked melamine / Powder coating

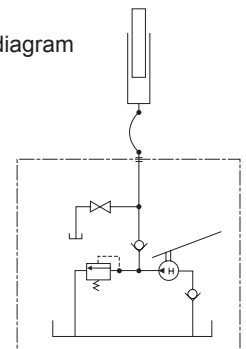
\*1 The lifter will not elevate when overloaded.

\*2 This is not attached to the HLH-100.



HLH-120

### Hydraulic circuit diagram





HLH-400SW



HLH-400SW During lowering

Unit: inch

|          | Model     | Load capacity | Table dimensions<br>W × L | Stroke<br>(ST) | Table height<br>(H to H1) | Overall<br>length (LL) | Wheels        | Number of<br>pedals steps | Deadweight |
|----------|-----------|---------------|---------------------------|----------------|---------------------------|------------------------|---------------|---------------------------|------------|
| Standard | HLH-100   | 220 lbs       | 13.8×22.4                 | 15.7           | 7.9 to 23.6               | 30.1                   | φ3.9 rubber   | Approx. 12 times          | 41.9 lbs   |
|          | HLH-120   | 264 lbs       | 15.7×28.3                 | 19             | 9.3 to 28.3               | 36.6                   | φ3.9 rubber   | Approx. 20 times          | 66.1 lbs   |
|          | HLH-150W  | 330 lbs       | 19.7×31.5                 | 43.4           | 14.0 to 57.4              | 39.8                   | φ3.9 rubber   | Approx. 62 times          | 150 lbs    |
|          | HLH-200   | 441 lbs       | 19.7×31.5                 | 21.1           | 10.3 to 31.4              | 39.8                   | φ3.9 rubber   | Approx. 36 times          | 99 lbs     |
|          | HLH-300W  | 661 lbs       | 23.6×35.4                 | 47.9           | 16.2 to 64.1              | 44.1                   | φ5.9 rubber   | Approx. 85 times          | 220 lbs    |
|          | HLH-400S  | 882 lbs       | 19.7×31.5                 | 20.5           | 10.9 to 31.4              | 39.8                   | φ3.9 urethane | Approx. 62 times          | 136.7 lbs  |
|          | HLH-400SW |               | 19.7×23.6                 | 27.3           | 14.4 to 41.7              | 32.1                   | φ5.1 rubber   | Approx. 58 times          | 154 lbs    |
|          | HLH-400M  |               | 23.6×35.4                 | 23.6           | 13 to 36.6                | 44.1                   | φ5.9 rubber   | Approx. 58 times          | 176 lbs    |
|          | HLH-400L  |               | 23.6×47.2                 | 34.2           | 13 to 47.2                | 55.9                   | φ5.9 rubber   | Approx. 85 times          | 220 lbs    |
|          | HLH-500MW | 1103 lbs      | 23.6×35.4                 | 49.2           | 18.7 to 67.9              | 45.7                   | φ7.9 urethane | Approx. 00 times          | 374.9 lbs  |
|          | HLH-700   | 1543 lbs      | 23.6×35.4                 | 23.6           | 13 to 36.6                | 44.1                   | φ5.9 urethane | Approx. 85 times          | 176 lbs    |
|          | HLH-1000M | 2205 lbs      | 23.6×35.4                 | 23.6           | 15.7 to 39.4              | 45.7                   | φ7.9 urethane | Approx. 00 times          | 286.7 lbs  |
|          | HLH-1000L |               | 23.6×47.2                 | 33.1           | 15.7 to 48.8              | 57.5                   |               | Approx. 00 times          | 363.8 lbs  |

\* HLH-100's push handle can be folded.