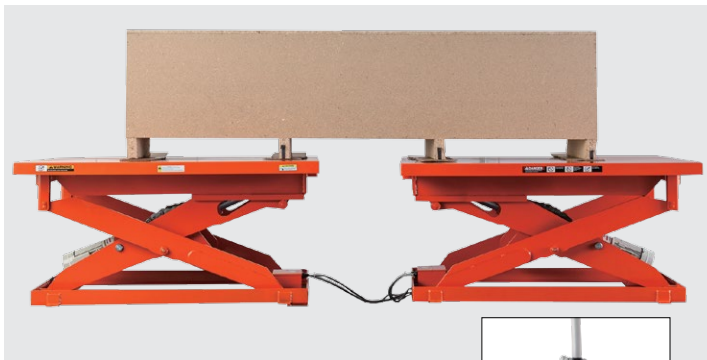


MLI Mechanical-Electric Lift (Ball Screw, Electric) Synchronized / Heavy Duty

2 -units synchronized. Also available in your choice of lift motion depending on the usage.

MAJOR FEATURES

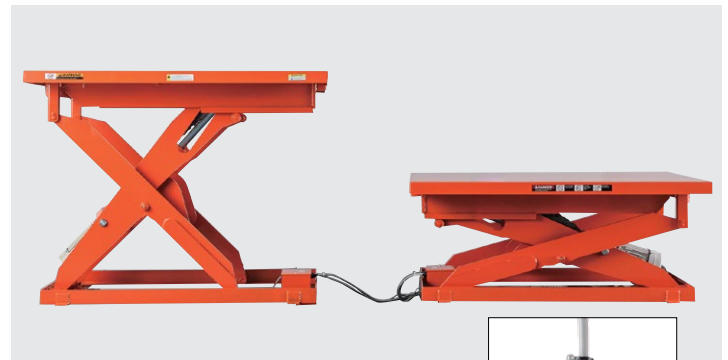
- No hydraulic drift
- Can be used up to 100,000 cycles continuously
- Available in 3 types of lift motion according to the usage
- Three-phase 220VAC
Three-phase 460VAC



Synchronized. Both units move.



Motion select dial

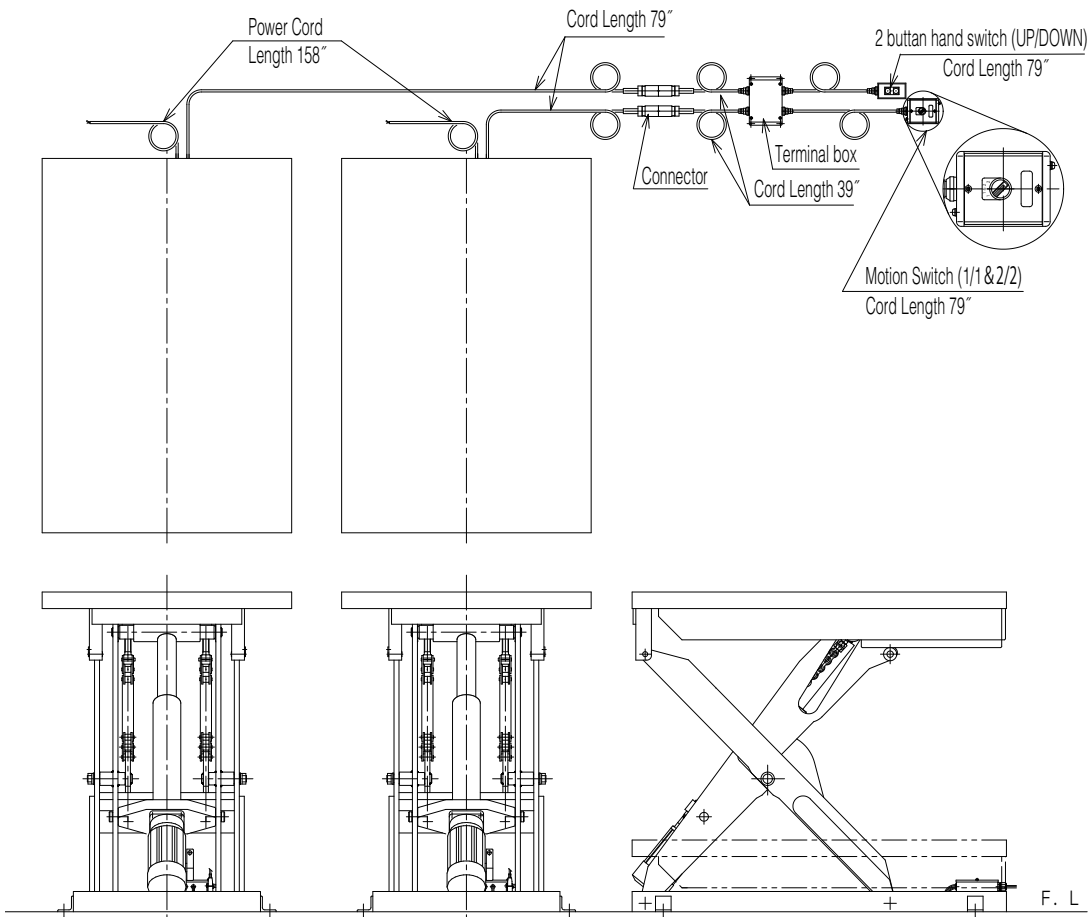


Only the left unit moves.



Motion select dial

2 synchronized units



Electric circuit diagram

